



Installation Instructions

Vista Operating System Special Note

Users of the Vista operating system should note steps 13-15 as they are particular to Vista. If the default settings are used, Vista's "rights management" system will prevent the unit from initializing the computer. By following the steps noted in 13-15, a folder will be created and the software will install properly

Step 1

Go to www.easymilelog.com/support to see the following screen



✓ Like David Winiarczyk, Charlene Peterson and 88 others like this. · Admin Page · Insights

Home Product Details FAQs Support Buy About Us Contact Us

Support

EasyMileLog Support / Downloads

You will find all downloads such as software and manuals listed below. If you have any other a question that cannot find the answer to under our FAQs section, please send us an email to sales@easymilelog.com, or give us at call at: 702-586-6026.

Show 10 entries

Search:

EasyMileLog Downloads	Download Link	Revision Date
Software Zip	Downloads	02/01/2011
Software Exe	Downloads	02/01/2011
Manual	Downloads	02/01/2011

Showing 1 to 4 of 4 entries

Select download under "Software.exe". If this does not work due to security settings on your computer, you can also download the "software.zip" which will then need to be saved to your computer and installed from the .zip file. All other steps remain the same.

Step 2

Select "Run"

Support

EasyMileLog Support / Downloads

You will find all downloads such as software, manuals, and more. If you have a question, please send us an email to sales@easymilelog.com

Show 10 entries

EasyMileLog Downloads
EasyMileLog Downloads
Software Zip
Software Exe
Manual

Showing 1 to 4 of 4 entries



Find the answer to under our FAQs

Search:

Revision Date
02/01/2011
02/01/2011
02/01/2011

Step 3

Select "Next"

Support

EasyMileLog Support / Downloads

You will find all downloads such as software, manuals, and more. If you have a question, please send us an email to sales@easymilelog.com

Show 10 entries

EasyMileLog Downloads
EasyMileLog Downloads
Software Zip
Software Exe
Manual

Showing 1 to 4 of 4 entries



Find the answer to under our FAQs

Search:

Revision Date
2011
2011
2011

Step 4

Check to “accept the terms of the license agreement”, then select “next”

Support

EasyMileLog Support /

You will find all downloads such as...
section, please send us an email to

Show 10 entries

- EasyMileLog Downloads
- EasyMileLog Downloads
- Software Zip
- Software Exe
- Manual

Showing 1 to 4 of 4 entries



...e answer to under our FAQs

Search:

ion Date

2011
2011
2011

Step 5

Enter your user name and organization, and select “next”

Support

EasyMileLog Support /

You will find all downloads such as...
section, please send us an email to

Show 10 entries

- EasyMileLog Downloads
- EasyMileLog Downloads
- Software Zip
- Software Exe
- Manual

Showing 1 to 4 of 4 entries



...e answer to under our FAQs

Search:

ion Date

2011
2011
2011

Step 6

Use the default setting, and select “next”

Support

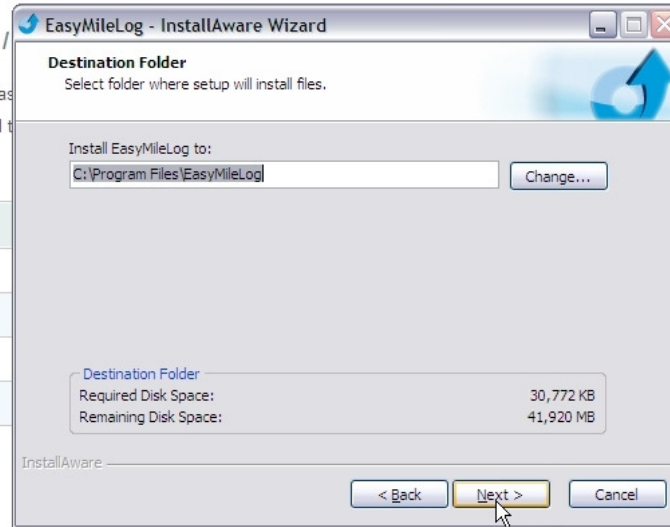
EasyMileLog Support /

You will find all downloads such as software zip files in this section, please send us an email to support@easymilelog.com

Show 10 entries

- EasyMileLog Downloads
- EasyMileLog Downloads
- Software Zip
- Software Exe
- Manual

Showing 1 to 4 of 4 entries



Step 7

The program can be visible is for all users of the computer, or only for a single profile, and select “next”

Support

EasyMileLog Support /

You will find all downloads such as software zip files in this section, please send us an email to support@easymilelog.com

Show 10 entries

- EasyMileLog Downloads
- EasyMileLog Downloads
- Software Zip
- Software Exe
- Manual

Showing 1 to 4 of 4 entries



Step 8

Select "Next"

Support

EasyMileLog Support /

You will find all downloads such as...
section, please send us an email to

Show 10 entries

EasyMileLog Downloads

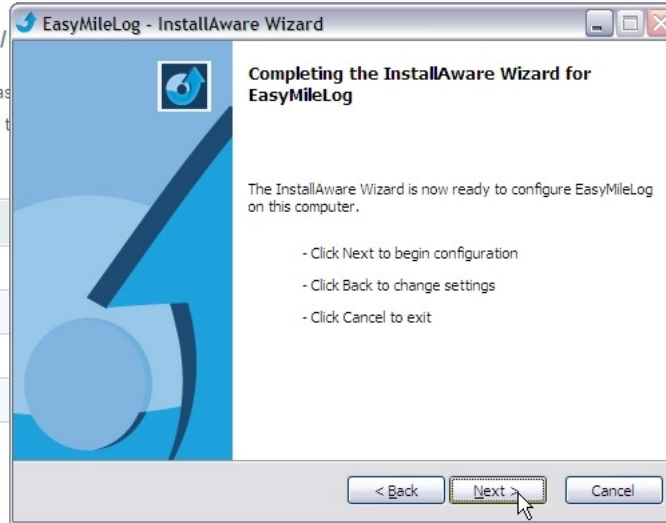
EasyMileLog Downloads

Software Zip

Software Exe

Manual

Showing 1 to 4 of 4 entries



Step 9

Select "Finish" You will now need to plug the EM Log Unit into the computer.

Support

EasyMileLog Support /

You will find all downloads such as...
section, please send us an email to

Show 10 entries

EasyMileLog Downloads

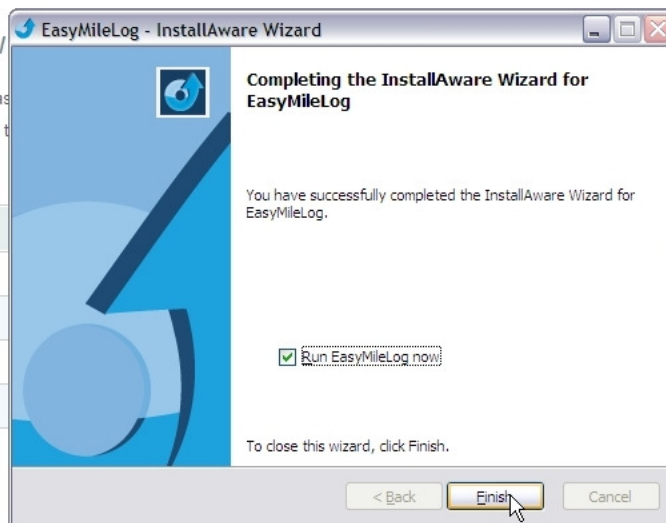
EasyMileLog Downloads

Software Zip

Software Exe

Manual

Showing 1 to 4 of 4 entries



Step 10

Make sure the EM Log unit is plugged into the computer via the USB cable and Select “Next”

Support

EasyMileLog Support /

You will find all downloads such as software zip, software exe, manual in this section, please send us an email to support@easymilelog.com if you have any question.

Show 10 entries

EasyMileLog Downloads

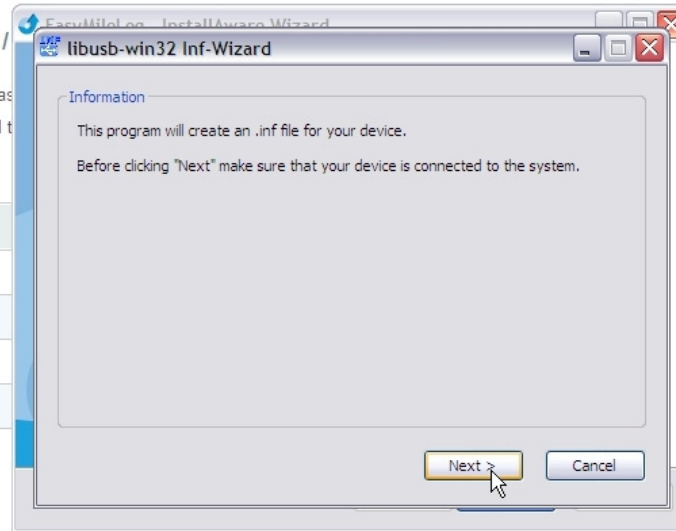
EasyMileLog Downloads

Software Zip

Software Exe

Manual

Showing 1 to 4 of 4 entries



Step 11

Select the items with Vendor ID 0x10B6 and product ID 0x0600. The description may be either “EZ Mile Log” or “unknown device”. Both are correct.

Support

EasyMileLog Support /

You will find all downloads such as software zip, software exe, manual in this section, please send us an email to support@easymilelog.com if you have any question.

Show 10 entries

EasyMileLog Downloads

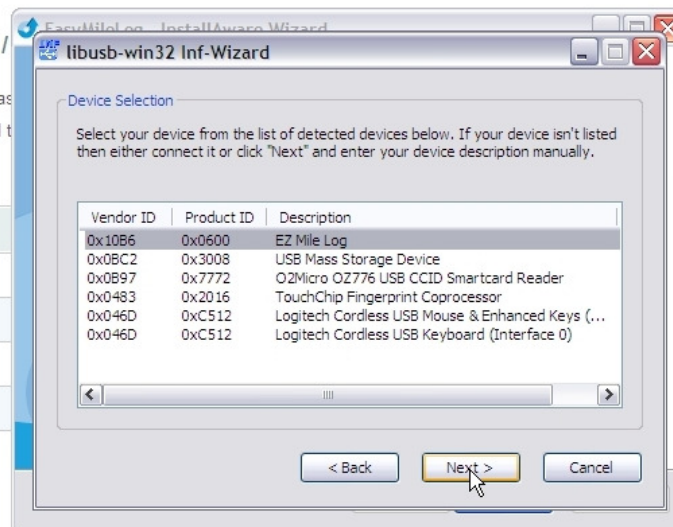
EasyMileLog Downloads

Software Zip

Software Exe

Manual

Showing 1 to 4 of 4 entries



Step 12

There is no need to change any of the settings on this screen, so select “next”

Support

EasyMileLog Support /

You will find all downloads such as software zip files in this section, please send us an email to support@easymilelog.com

Show 10 entries

EasyMileLog Downloads

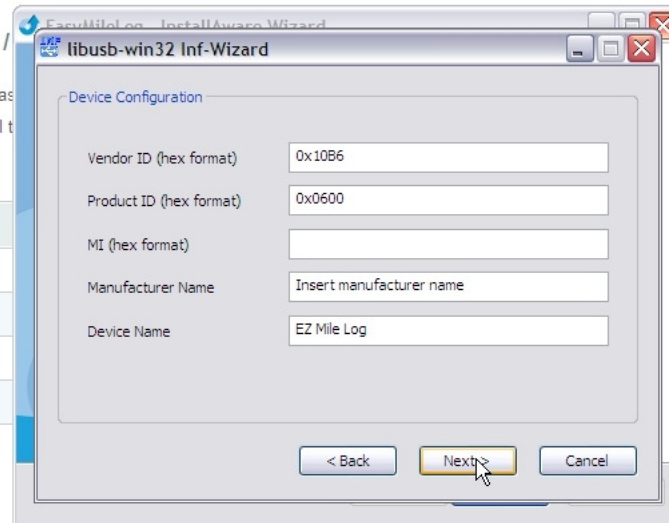
EasyMileLog Downloads

Software Zip

Software Exe

Manual

Showing 1 to 4 of 4 entries



answer to under our FAQs

Search:

Creation Date

2011

2011

2011

Step 13

Windows 7 and XP users should select “save” and skip to step 16
Windows Vista users need to select the icon to “create a new folder”

Support

EasyMileLog Support /

You will find all downloads such as software zip files in this section, please send us an email to support@easymilelog.com

Show 10 entries

EasyMileLog Downloads

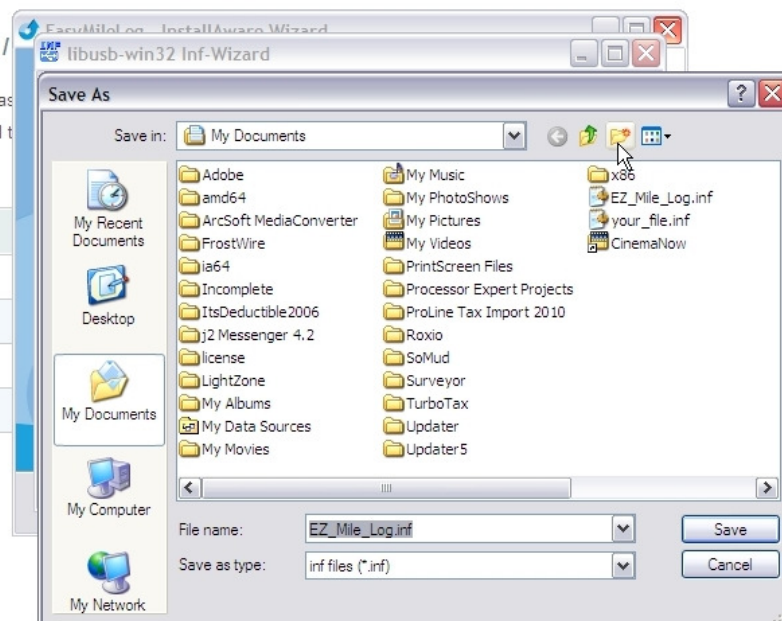
EasyMileLog Downloads

Software Zip

Software Exe

Manual

Showing 1 to 4 of 4 entries



under our FAQs

Step 14

Windows Vista users – create a new folder and label it in a manner that you will recognize, such as EZMILE

Support

EasyMileLog Support /

You will find all downloads such as in the section, please send us an email to

Show 10 entries

EasyMileLog Downloads

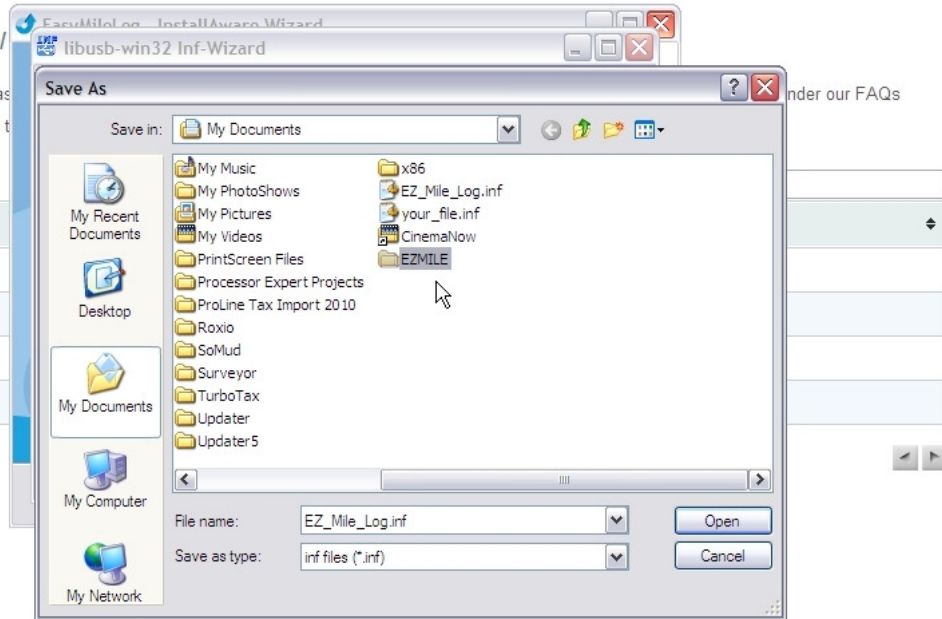
EasyMileLog Downloads

Software Zip

Software Exe

Manual

Showing 1 to 4 of 4 entries



Step 15

Windows Vista Users – Select the folder which you just created, and select “save”

Support

EasyMileLog Support /

You will find all downloads such as in the section, please send us an email to

Show 10 entries

EasyMileLog Downloads

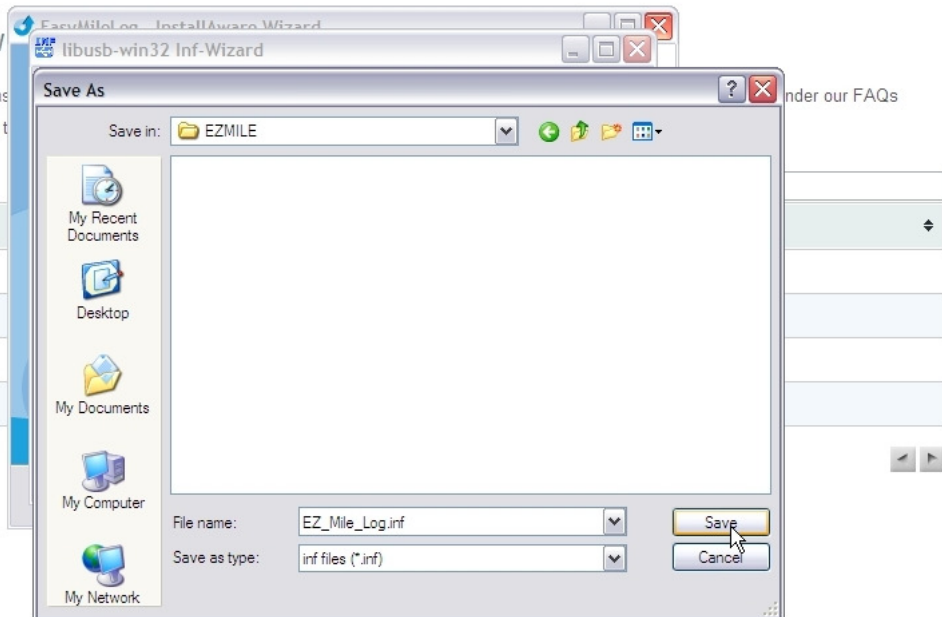
EasyMileLog Downloads

Software Zip

Software Exe

Manual

Showing 1 to 4 of 4 entries



Special NOTE for VISTA Users

After Step 15, the screen on step 16 may/may not appear. If it appears, finish step 16. If it does not, you will need to follow the installation process again. When you do, do not create a new folder, as you did in step 14, but simply use the folder which you created in Step 14 of the first installation. We apologize for the inconvenience this process may cause, but due to the “Rights” configuration that was used in the creation of Vista, these additional steps are necessary. These additional steps were corrected in Windows 7, which is why these steps are unnecessary with other operating system versions.

Step 16

Do NOT Select “save” until you have selected “INSTALL NOW”. The “Install Now” button allows your computer to communicate with the device. This process should take about a minute..

Support

EasyMileLog Support /

You will find all downloads such as
section, please send us an email to

Show 10 entries

EasyMileLog Downloads

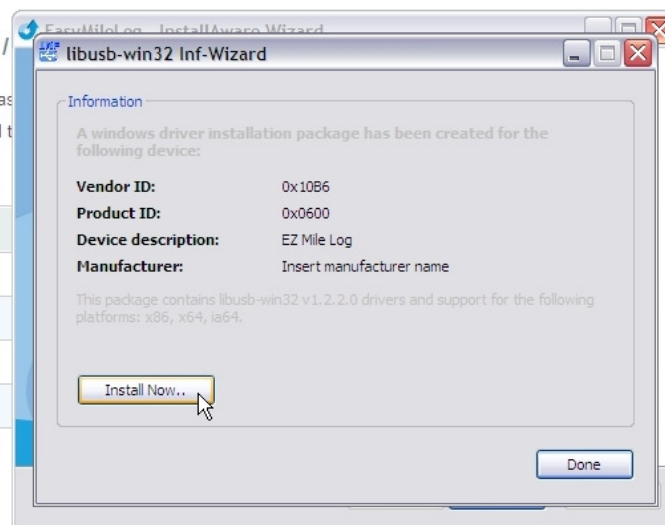
EasyMileLog Downloads

Software Zip

Software Exe

Manual

Showing 1 to 4 of 4 entries



answer to under our FAQs

Search:

ion Date

'2011

'2011

'2011

Your software should now be installed. If there are any problems, please contact customer service toll free at (855) 254-7572, option 2.

Thank you for using the EM Log.